



AAD COMMERCIAL & INDUSTRIAL ELECTRICAL (Pty) Ltd

Reg No:- 2015/352438/07

Converted from Closed Corporation 1995/022102/23

Plot No: 6
Elizabeth Avenue
Pendale
1873
Tel:- (016) 365-0029
Cell:- 082 463 4462/4

P.O Box 1367
Meyerton
1960
Email:- admin@aadelectrical.co.za
Office:- (016) 365-0029
Fax:- 086 651 5166



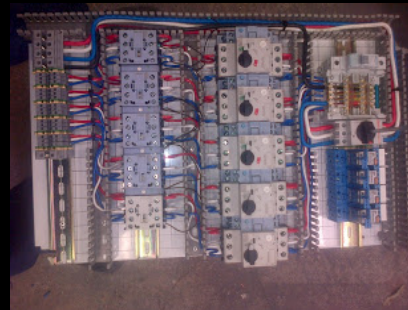
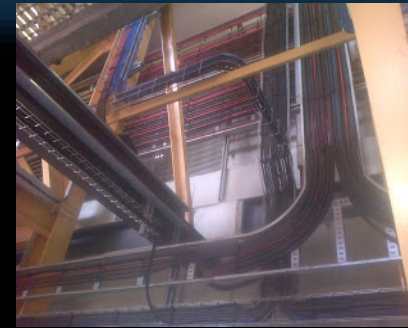
COMPANY PROFILE

COMPANY OVERVIEW

Incorporated in 1996, AAD commercial & Industrial Electrical is a dynamic and independent electrical contractor specializing in all complexities of electrical installations and projects. Since forming the company 20 years ago, we have worked hard to build a strong reputation across many industries and by delivering excellent electrical service that is both competitive and affordable, we have never failed to complete a contract for any reason whatsoever. We subscribe to the belief that "if something is wrong, make it right!"

Our organization takes pride in our past, are committed to our present and look forward to our future. We value stability, integrity, and dependability, as demonstrated through our work with major corporations within the Commercial, Retail, Property development and Industrial Market sectors.

From Management, to Contractors, to Suppliers, the process of completing a project is closely planned, monitored, and executed to maintain high levels of excellence and efficiency. Having completed many electrical installation contracts for prestigious companies, we continue to grow our customer base through positive word of mouth and client referral.





Our Mission

To safely and consistently deliver specialized electrical service to the challenging projects of our clients in a cost effective and responsive way through:

- Constant reviews and improvements
- Delivering on our dedicated work
- Providing specialized advice and excellence in customer service
- Utilizing professional project management principles to deliver products on time

Our Vision

To consistently strive to deliver a high standard of service to our customers and empowerment to our people through progressive team excellence.

Our Values

- **CLEINT FOCUS**
We live by and for our customers' success, we want to be their first choice in helping their success
- **RESPECT**
Respect to others on all levels of personal and professional conduct
- **RESPONSIBILITY**
To ensure our projects are successfully completed from beginning to end
- **INTEGRITY**
To be committed, courageous, honest, disciplined and resilient in our performance internally with our staff and externally with our client



SAFETY

We realize that the success of our Company is totally dependent on the quality of our work, setting and maintaining the highest possible standards of quality for all our services, through the constant training of our workforce, proper contracts administration and management, ethical business methods, and the close co-operation between individuals and Companies.

A safe work environment translates to project completions that are consistently finished on time or early. At AAD Commercial and Industrial Electrical our employees are our most important asset, ensuring their health and safety at work is of paramount importance to us. This is the cornerstone of our approach to Health and Safety “To lead by example”, build trust and respect, communicate clearly and involve everyone in order to continuously learn.

FIELD OF SPECIALIZATION AND SERVICES



We specialize in SABS code of Practice:

SANS 0142 Wiring Code
SABS 0108 Hazardous Locations
SABS 089 Petroleum Industry
SABS 086 Explosive atmospheres
SABS 051 Hospitals, Anaesthetizing and similar

Comply with regulations in terms of:

- Occupational Health & safety Act 85 of 1993.
- The Compensation for Occupational Injuries & Disease Act 130 of 1993.
- The Unemployment Insurance Act 63 of 2001.
- The Employment Equity Act 55 of 1998.
- Basic Conditions of Employment Act 75 of 1995

AAD Services:

Electrical Installations

- Small Power and Lighting
- Design
- Distribution & switchgear
- Cable management - bus bar trucking, cable trucking, cable trays & conduit
- Lighting installations
- Lighting control
- Emergency lighting design, installation, and commissioning
- External lighting
- Power installations – sockets, isolators and motor starters
- Dedicated power supplies
- Fixed equipment supplies
- Lightning protection
- Back-up Power – Generators, UPS, Solar

Electrical Maintenance

- Planned maintenance
- Reactive maintenance
- Remedial works
- Emergency call outs
- Minor works - additional sockets or lighting points

Electrical Testing

- Electrical testing - new installation
- Electrical - periodic testing
- Portable appliance testing
- Emergency lighting scheduled testing



Our team:

Alex A. Dalziel – Director Project Execution/Technical Master Installation Electrician - 00242/EP3543/1991; Project Management

Miemie A Dalziel – Director Project Support; HR/Finance NWU - Labour Relations; NEASA Member; Project Management

Projects office

Our project office capability ensures that throughout the project lifecycle, the project is monitored and controlled and resourced effectively in order to manage all aspects of the project and be operationally ready to meet the scheduled deadlines.

Technical operations

Our technical team delivers all aspects of the execution of the project under the control of our on-site foreman, supported by an experienced project support office.

Our Business Partners

At AAD, we place great value on our relationships with our Suppliers, Consultants and Clients. We believe our products and services must always meet or exceed expectations, and we must strive to improve on it. Over the past few years we have seen increasing levels of upheaval in some of the areas we operate and we have had the pleasure to work hand in hand with some dynamic Consulting Engineers.

- ESE Consulting Engineers Mr. K Goodenough, Mr. D Watson
- KKA Consulting Engineers Mr. A van Zeil
- Process Dynamics Mr. K v Niekerk
- Quad Africa Consulting Mr. B Mitchell
- WSP Group Africa (Pty) Ltd Mr. R Baard, Mr. R v Rooyen

Our Commitment

AAD is committed to a policy of non-discrimination and the provision of equal opportunities for all our employees, for them to be able to maximize their skills and abilities, and enjoy work satisfaction.

Further to the above, we make use of local un-skilled Labour for general worker's tasks, providing them with on the job training, in order to assist with job creation when not in our immediate environment.

CLIENTS AND WORK COMPLETED

Amis African mineral standards

- Various Industrial Electrical Installations

Adcock ingram pharmaceuticals - wadeville

- New Offices Electrical Installation
- Generator installation Bitek feeds
- New Industrial Electrical Installation

Bmw

- New Offices Electrical Installation (Oracle house)
- Upgrade Office Electrical Installation (Bavaria)

Ceilo Blu Project

- Warehouse Extensions
- Truck Plugs
- General maintenance
- New filling lines - Butter & Gee
- Factory Electrical Installation
- Factory UPGRADE Electrical Installation Commercial Cold Storage
- Factory UPGRADE Electrical Installation
- Generator installation

Hazeldene

- New electrical Installation

Pick 'n Pay - Longmeadow Distribution Centre

- Electrical installation of a 150 kW solar photovoltaic (PV) energy system

Pick n Pay Retailers -Country Wide

Major stores and Stores Upgrade

- Electrical revamps & lighting
- New generation stores
- New Electrical Installations
- Distribution/PFC/Lighting/Generator
- Testing, commissioning & Certification.

Clover SA – Country Wide

- Coldroom & warehouse installations
- Generator installation
- New filling lines - UHT; ultramel & Chocolate milk
- New offices installation □ Coldroom & warehouse installations
- Truck Plugs / CIP & wash bay installation

Eastrand Mall

- Electrical Upgrade Loreal of Paris
- New Offices Electrical Installation
- LPG installation La sport

Magalies citrus

- New Factory Electrical Installation
- Coldroom & warehouse installations
- Generator upgrade Nestle

Mosselbay

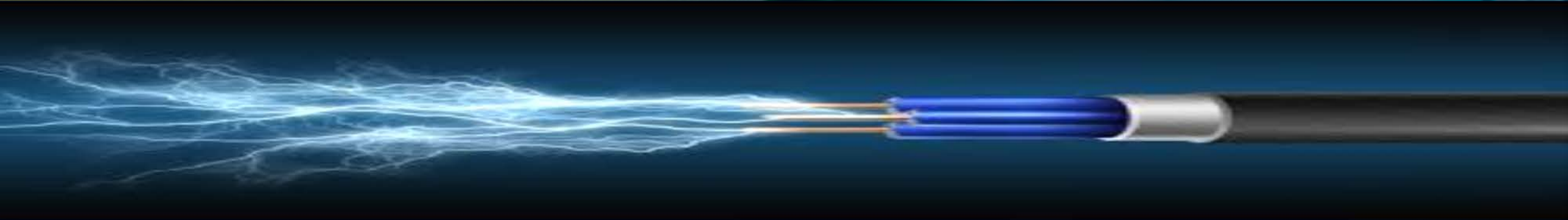
- De-commission & strip Nestle Standerton
- Complete new Electrical installation

Mosselbay

- Ideal milk & Caramel treat filling lines
- Generator installation

Everleigh Shopping Centre Boksburg

- Complete new Electrical installation For Hi-Fi Corp, Tekkie Town, Dischem, Mr. Price Home, Corricraft.
- Area lighting & Parking area



We thank you for this opportunity to view our profile, and trust that we can be of service to your company in the near future and welcome you to our family